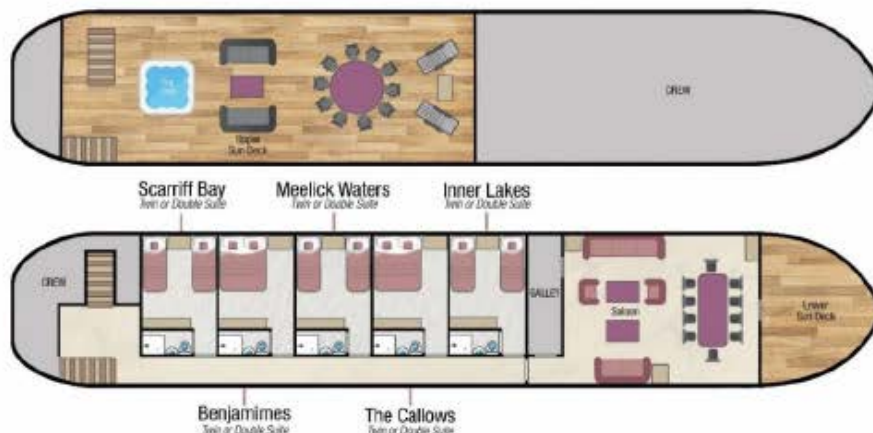


Shannon Princess - Fact Sheet



Boat Specifics



Original year of construction: 2003
Dimensions: 115ft (35m) x 20ft (6m)
Generators: 3 x 220 volt generators
Main engine: 2 engines each 200hp gives 400hp + bow thrusters with 150hp
Maximum speed: 12 knots
Water & fuel capacity: 5 tons of water and 3 tons of fuel

Your crew on board

Crew of 5: Captain, Chef, Tour Guide & 2 Hostesses
All staff speak English

Accommodation on board

Maximum 10 passengers in 5 cabins which can all be configured with either 2 single beds or a double bed.

All cabins have a closet with ample storage space, private bathroom, central heating, bottled water and chocolates.

The cabins are all well above the waterline with large opening panoramic windows 6ft 5" x 1ft 6" (2m x 0.5m), allowing unrestricted views.

Cabin Sizes

All cabins are similar in size 9ft 10" x 12ft 9" (3m x 4m) and are equally comfortable. The cabin height is 6ft 9" (2.1m).

All measurements are approximate and include the bathroom.

Size of the beds: As single beds, they measure 3ft (90cm) x 6ft 9" (2.1m) or as a double bed 6ft (1.8m) x 6ft 9" (2.1m).

Bathrooms each cabin has an en-suite bathroom measuring 3ft 3" x 6ft 6" (1m x 2m). All have shower, hand basin, WC and have tiled floors and walls with white or stainless steel fittings. Each is supplied with washing gel, hand soap, shampoo, conditioner, body lotion, vanity packs, shower cap, towels, robes & hairdryer.

There is an extractor fan but no windows in any of the bathrooms.

Climate Control

Each suite has individually controlled heating & air conditioning.

Computer and Telephone

Wi-Fi is available on board for guests to connect to the internet who bring their own laptop or phone. This is subject to availability in some remote locations.

Guests can also gain access to the internet at libraries and cyber cafes whilst visiting towns and villages during the cruise.

There are no passenger phones on board Shannon Princess.

Currency

The local currency in Ireland is the Euro.
We are unable to accept credit or debit cards on board.

Cycling & Walking

You are welcome to walk or cycle using the on board bicycles as often as you wish. There are 2 bicycles kept on board and additional bikes can be hired on request at no extra charge. Please inform our Reservations team at least 8 weeks in advance should you require these.

Once on-board, the Captain will be happy to discuss daily opportunities for walking or cycling and places of interest nearby to visit.

Dining Room & Saloon

The light & airy Saloon is 20ft (6m) x 35ft (10.6m) and the height is 6ft 9" (2.1m).

The modern interior is carpeted throughout and there are 2 large sofas, 3 armchairs and 2 coffee tables. The dining table seats all 10 passengers at a single sitting and there is a fully stocked bar.

Large picture windows run along 3 sides of the Saloon which is on the same level as the cabins.

There are 11 steps from the Saloon to the Upper Deck with a handrail.

Electricity

Shannon Princess is wired for 220 volts / 50 hertz with a 110 volt socket in each bathroom for shaving. We suggest you bring an adapter for your particular appliances, which should correspond to the standard UK 3-pin plug.

If you wish to use your electrical appliance on board, please ask one of the crew when you arrive on board to ensure that it is suitable to the barge's electrical system.

European Waterways cannot be held responsible for unforeseen voltage fluctuations which sometimes occur when swapping from one voltage system to another.

Excursions

The Shannon Princess has an air-conditioned 10 passenger minibus which is used for transfers and for several excursions during the cruise. Some excursions are within walking distance from the boat mooring.

For charter bookings, the itinerary can be adapted to suit your group's particular needs. If a destination or excursion is within a reasonable distance of the barge, we will do everything we can to arrange it. Please speak with the Reservations team in advance of your cruise and we can pre-arrange with the Captain.

The barge does not carry fishing rods, for those wanting to fish, a Gillie can be hired who will provide rods, the boat and all necessary equipment. The cost is 100 Euros for an afternoon for two people.

Any guests not wishing to participate in an excursion are welcome to remain on-board.

Facilities on board

- 5 person Spa pool (hot-tub) on the sundeck
- 6 Bicycles (more available on request at no extra charge see Cycling & Walking)
- A small library of books and maps
- Board games (including Scrabble, Monopoly, Chess, Draughts and Backgammon)
- Binoculars for watching the wild bird life
- Guest i-Pods can be connected to the Hi-Fi system
- Hi-Fi system and CD player.

Food & Drink

All meals on board are freshly prepared by your chef and most meals are a set-menu (there is no choice available). International and local cuisine is served.

We are able to arrange special meals, e.g. vegetarian / no fish / vegan etc; and we are able to cater for any preferences or allergies. However, it is most important that we are notified of any specific requirements at least 8 weeks prior to your departure date. Failure to notify European Waterways in advance of your cruise may result in disappointment on board.

There is no assigned seating for meals and the dining table on Shannon Princess seats all guests at a single sitting.

Breakfast is Continental-style with fresh breads & pastries baked on board along with fruit & cereals. A full cooked Irish breakfast is also offered.

Lunch is usually a selection of colourful salads, pates and fish dishes. Lunches are buffet or waiter service, occasionally a picnic out is arranged (weather permitting). Lunch is accompanied by quality wines selected by the chef.

Dinner: Always a gastronomic adventure created by your talented chef. A taste of regional cuisine by candlelight, complemented by fine wines, followed by a selection of regional cheeses, coffee and liqueurs.

Farewell dinner: is held on the last night of the cruise. Guests may choose to dress slightly more formal.

Drinks included in the cruise price: Non-alcoholic beverages and regular or decaffeinated tea and coffee, whole or low fat milk, are offered with all meals. The well-stocked bar is open 24 hours, which includes wines, spirits, beers & soft drinks. All wines are provided with meals and there is a Champagne welcome on arrival.

Drinks not included in the cruise price: Champagne (with the exception of the reception) and special vintage wines, however these can be purchased in advance of your cruise at cost price – please speak to our reservation team. We do not recommend specific beverage orders unless you are chartering the whole barge.

Hot Air Ballooning

The region Shannon Princess cruises in is not suitable for hot air ballooning.

Laundry

We recommend you bring sufficient clean clothing for your cruise as there are no laundry facilities on board. However, the crew may be able to assist in an emergency on request. Laundry service available ashore.

Luggage / What to pack

Practical comfort and casual clothing is the norm aboard and for most excursions. Dress code for dinner is relaxed and informal.

The weather in Ireland can be changeable and we recommend you prepare for varied weather conditions particularly in early April / October

Suggested things to pack:

- Light clothing including shorts and T-shirts. A sweater / pashmina or lightweight jacket is recommended for evenings.
- During spring and autumn, you may need medium weight clothing. A lightweight raincoat for showery times and an umbrella are advisable.
- For the summer a sun-hat can be useful.
- Comfortable walking shoes with textured non-slip soles are recommended.
- There is a spa-pool on board, so don't forget your swim wear. Towels are provided.

Restricted Mobility

The interior of Shannon Princess is all on one level with no steps between the Saloon and the Cabins.

There are 11 steps between the Saloon and the Upper-deck with a handrail. There is a smaller Sundeck without any steps.

Most of our daily excursions are on level-ground with no steps to climb and the minibus transfers you to the sites so there is minimal walking. The only excursion that may be slightly difficult is to Cragganown as this has a challenging walk for those who are less mobile and there are some steps involved.

We can arrange the hire of a wheelchair for the week for approximately 100 Euros. If you would like us to hire a wheelchair please contact our Reservations team at least 8 weeks prior to your cruise date.

Space is limited on board and on the transfer vehicle, so please try and fit everything for your cruise into 1 soft suitcase, if possible, per person.

Medical

Please let us know in advance of your cruise if you require frequent or ongoing medical attention.

The crew are unable to administer medicines but can accompany you to a chemist for you to purchase any necessary medicines. Due to your cruise often being in a rural location, we recommend you bring all necessary medication with you.

Doctors are usually not far away for an urgent consultation and the Emergency Services can be called if required.

Problem during your Cruise

Please note that European Waterways cannot be responsible for any valuables that you bring on board. We strongly recommend that you do not bring valuables with you unless required and that you ensure that all valuables are covered by your travel insurance.

Safes are provided in each cabin on board Shannon Princess in the bottom of the closet. Cabin doors are not usually locked, for safety reasons.

Safety and Security

Once you are on board, your Captain will talk you through the Cruise Safety Procedures. Safety Instructions are detailed on the last page of this document

Smoking

We have a strict non-smoking policy for safety reasons and for the comfort of your fellow passengers.

Sundeck

There is a very large sundeck measuring 1,800ft² (167m²) on the upper-deck. There are 2 inviting seating areas with outdoor sofas and comfy chairs along with reclining chairs and parasols for shade. There is also a hot-tub. From the sun deck there are 11 steps down to the saloon and cabins on the lower deck.

Themed Cruises

Shannon Princess offers ad-hoc golf whilst cruising. Your Captain will be pleased to discuss this on-board and is able to reserve tee times, equipment hire and transportation to and from the Golf Clubs. Any charges for golf will need to be paid locally to the relevant club & taxi company.

However If you would like to book your golf in advance, please contact our Reservations team at least 3 weeks prior to your departure.

Guests who wish to play golf may need to present official handicap cards and/or letters of introduction from local golf clubs at home.

Shannon Princess offers a variety of cruises available for charter groups which include cycling, golf, fishing, pony-trekking, walking, antiques, crafts and spa-treatments. Please contact our Reservations team for more details or

visit www.europeanwaterways.com Themed / Special Interest cruises often have a supplement.

Tipping

Gratuities are not included in the cruise fare. Tipping is entirely discretionary but is greatly appreciated by the crew. If you are fully satisfied with the level of service on board. As a guideline, the average tip given by our guests from around the world is approximately 5% of the Cruise Fare.

The usual way to give the tip is to give the amount in cash as one lump sum to the Captain / Cruise Director on the last day of the cruise. They will distribute the amount equally amongst the crew.

Euros or Dollars are equally appreciated. ATMs are accessible for cash withdrawal on most itineraries during the cruise and the crew can advise where these are located.

Transfers

For details of the Shannon Princess vehicle, please see "Excursions". The approximate transfer duration between Dublin & Shannon Princess is 2 / 2.5 hours depending on the cruise direction.

Water

Tap water in Ireland and on-board Shannon Princess is potable and bottled water is also available.

Safety Instructions on Shannon Princess

On arrival the Captain will talk you through the Cruise Safety Procedures on board.

In addition, it is important that all passengers are familiar with the safety instructions detailed below.

- Please follow the instructions of the Captain and crew at all times.
- Remember that decks can be slippery. Please wear non-slip shoes and do not run or jump whilst on board.
- Do not walk on the side or rear decks or outside the guard rails.
- Passengers are not permitted in the engine rooms, technical areas or crew accommodation at any time, or in the galley or wheelhouse unless accompanied by a crew member.
- Do not embark or disembark the boat unless the gangplank and handrail are in place or the crew have advised that it is safe to do so. Never do so when the boat is moving.
- Be careful when the vessel is being moored up with the barge ropes. In particular do not step into a loop in the rope or try to release the mooring rope from a bollard.
- Keep clear of any overhead obstructions and remain seated if on deck whilst the barge passes under bridges with restricted headroom.
- Do not attempt to touch the sides of the lock or bridge.

- Do not open lower deck portholes whilst the boat is moving.
- Life jacket preservers are located in designated lockers in your cabin or in designated deck lockers. Once on board, please take the time to identify their location and read the instructions.
- For fire safety reasons, smoking is not permitted anywhere inside the boat.
- The barge's equipment such as bicycles or hot tub must only be used following preparation by the crew. Use of the bicycles is at your own risk. Breakable glasses are not permitted in the hot tub and alcohol consumption is not advised.
- There is an open bar policy on board. However, excessive alcohol consumption can be dangerous, particularly in a warm climate and in proximity to deep water and the captain has the discretion to withhold alcohol if safety to passengers or crew is at risk.

In an emergency

- Keep calm. Do not return to your cabin to recover your possessions.
- If you discover a fire on board, sound the fire alarm and notify a crew member immediately. If possible, close doors behind you to confine the fire. Please take the time to identify the location of fire alarms and fire extinguishers.
- If the alarm sounds or you hear repeated continuous blasts on the barge horn, you must if possible assemble on the sundeck for further instructions.
- If you discover water below deck, notify a crew member immediately and go to the sundeck to await further instructions.
- If you are in your cabin and the way to the sundeck is obstructed, follow the signs to the alternative fire exit. Please take the time to identify all fire exits.
- The emergency number for fire, police or medical assistance on all public phone networks is 112.

Please ask a member of the crew on board if you need further safety advice

Beratung und Buchung bei:



DOMIZILE REISEN®

Ammerseestr. 18 . D-82131 Gauting . Fon: +49.89.833084 . mailto: info@domizile.de
www.domizile.de . www.fine-rentals.com